

SUGAR QUAY SUMMER STRUCTURE 2011



Sell out summer riverside venue available in June – July 2011





Summer on the River Thames



Key Features

- Uniquely positioned marquee on a Jetty overlooking The Tower of London and HMS Belfast.
- Available for exclusive hire.
- Contemporary structure with lighting, furniture and cloakrooms.
- Flexible catering options: BBQs, bowl food, canapés and 3 course menus.
- Standing receptions, BBQs, dinners, meetings and day time conferences.

Capacities:

Standing – 500 guests

Dinner Dance – 250 guests

Available in June / July 2011



Drinks receptions





Seated dinners



- Capacity for 250 guests for dinner dance
- Wide variety of catering options
- Outdoor terraces on the Thames
- 40m window wall onto Thames
- Superior service
- Flexible lighting system
- In house DJ
- Luxury toilets
- Full event management
- £10m public liability insurance

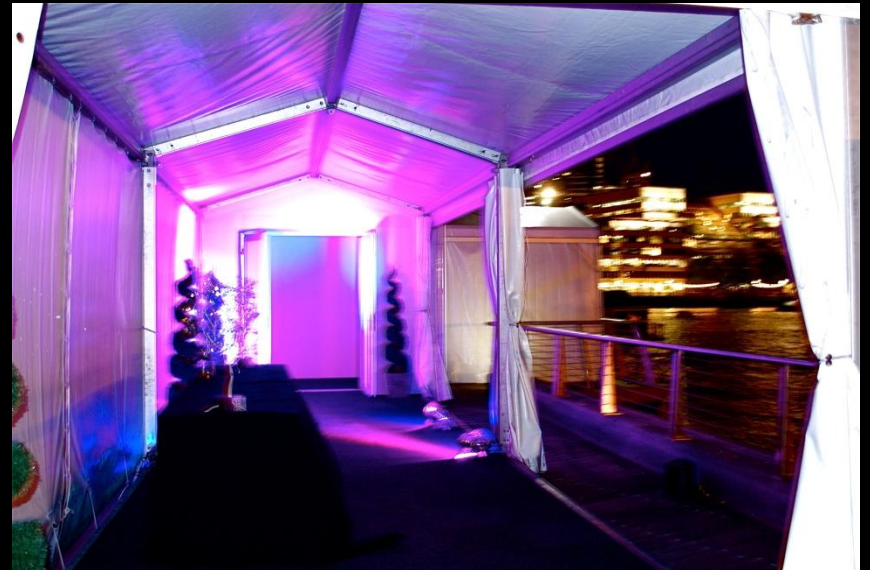


Spectacular outside space



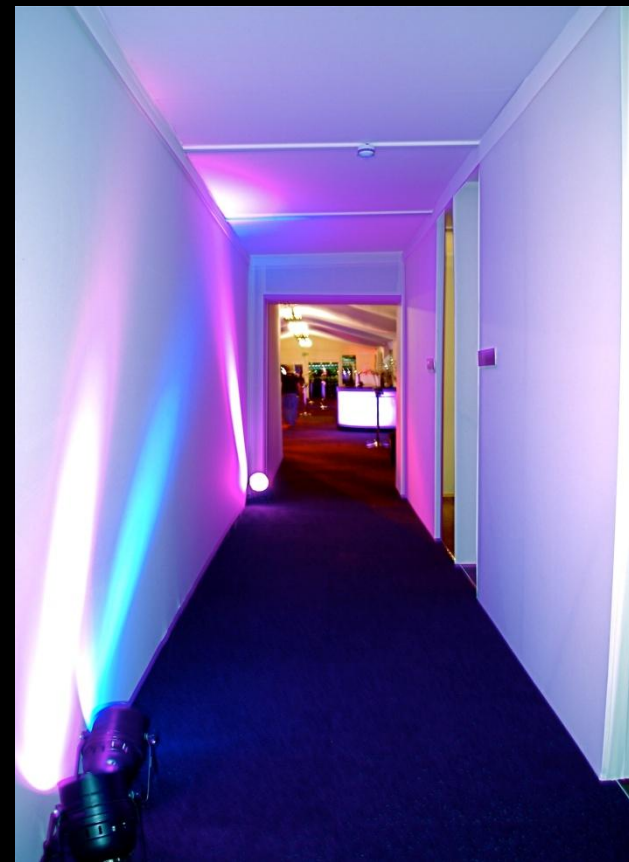


The entrance





Luxury facilities





Sample three course menu

At the start:

Chicken liver and thyme parfait with onion jam.

Ham hock terrine with tomato chutney.

Slow roasted tomato and red pepper soup with basil croutons

Wild mushroom and celeriac soup.

Smoked salmon and Atlantic prawn tower.

Red onion and goats cheese tartlet with rocket salad.

In the middle:

Breast of free range chicken served with fondant potato and forest mushrooms.

Parmesan and tarragon crusted salmon with roasted new potatoes and saffron cream.

Leek and Mushroom tart with balsamic syrup and rocket salad.

Roasted fillet of pork wrapped in prosciutto, on creamy mash with a cider mustard sauce.

Rump of lamb with burgundy jus on a rosemary and garlic potato cake.

At the end:

Lemon Posset with candied Lemon

Bread and butter pudding with crème anglaise.

British cheeseboard.

Chocolate brownie with vanilla ice cream

Eton mess



also available

Canapé menus

BBQs

Speciality food stations

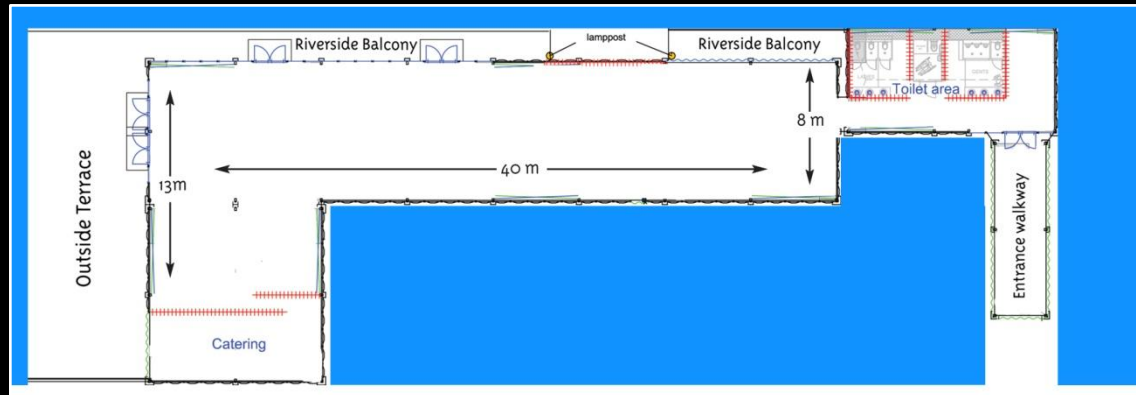
Bowl food

Buffets

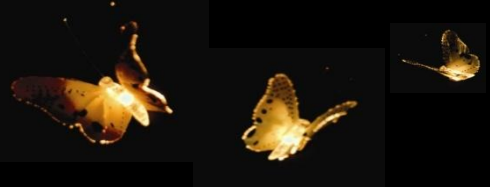
Conference lunches



The layout



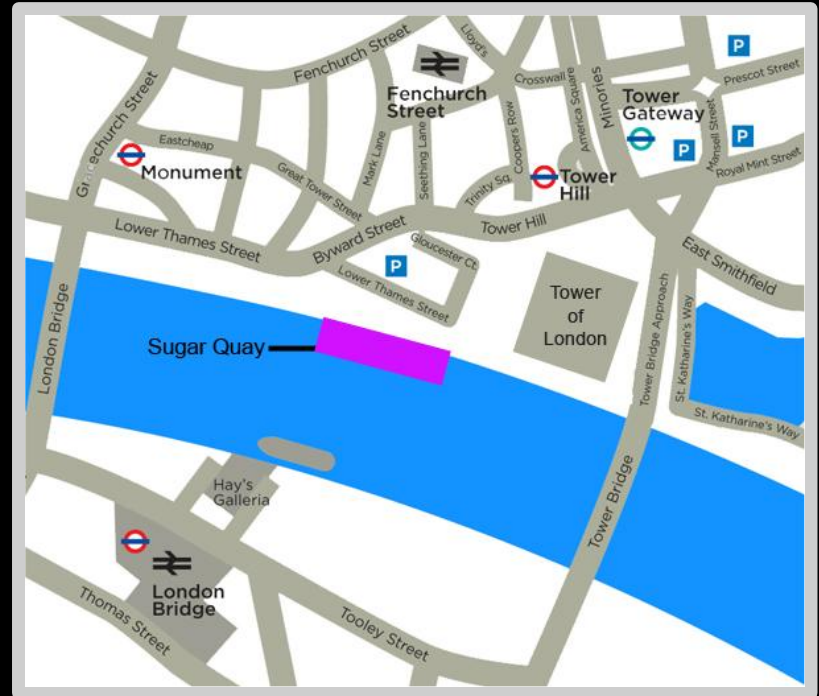
suitable for up to 500 guests for a reception or BBQ or 250 for a seated lunch or dinner.



Directions

Transport:

Closest underground station is Tower Hill; walking distance from Bank, Monument and London Bridge.



inneventive

Events to engage and inspire



For a quote or further information please contact:

Inneventive Limited
13 David Mews, Porter Street
London, W1u 6EQ

Tel: 0207 518 2480

events@inneventive.co.uk

www.ineventive.co.uk

