

# THE SUITES COLLECTION

at The May Fair Hotel

To book or enquire call  
UK +44 (0)20 7769 4041  
US 1-888-201-1718

## THE PENTHOUSE



## VERSATILITY



### MEETINGS

The Penthouse's luxury five-star rooms provide a majestic, versatile setting for meetings of any tone. Up to eight people can be incorporated in a boardroom layout, with eight comfortably seated for a sofa conference. The spectacular, city-wide views of the 100-foot balcony provide the ideal setting for lunch, dinner or breakfast gatherings; personal security management ensures privacy and discretion, with a dedicated events manager on hand for all business requirements.



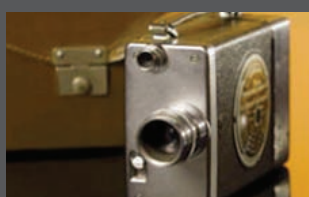
### LAUNCHES

Seeking a sleek, opulent and naturally lit setting for a luxurious lingerie launch photo shoot? You could find no better location than The May Fair's luxury Penthouse suite. The Penthouse's expansive five-star surroundings have hosted launches for many top brands, from famous lingerie names to cosmetics and technology brands. All have taken advantage of the glamour, size and versatility of the space.



### EVENTS

The Penthouse is one of London's most glamorous and sought after entertainment venues: opulent, spacious and hugely versatile. Up to 80 people can be comfortably accommodated in a drinks reception, and the space can be spectacularly dressed for dinners, lunches, private fashion shows and after-parties. The spectacular views from the 100ft terrace across the London skyline provide a sweeping backdrop to any occasion. The terrace is heated, has a canopy and accommodates smokers.

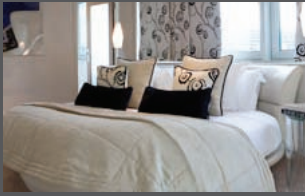


### FILMING

Few locations can instantly convey sophistication and style like one of London's most sought after luxury hotel rooms. The elegant features of the Penthouse set an instant mood of quality for broadcasters and record labels, providing the sets for the some of the latest up and coming television programmes and music videos.

THE MAY FAIR

## SPECIFICATIONS



### SPECIFICATIONS

- Lounge with integrated fireplace, curtain and lighting system
- Dining area with full-size 8 seat table
- Master Bedroom with king size double bed
- Second Bedroom with circular revolving bed and en-suite bathroom
- Bathroom with marble sarcophagus bath, LCD TV and illuminated rain shower
- Kitchen for entertaining



### DIMENSIONS

- Total floor space of the Penthouse Suite is 199m<sup>2</sup> / 2137.6ft<sup>2</sup>



### TECHNOLOGY

- 65" Bang & Olufsen plasma TV and Bang & Olufsen CD player with MP3 connectivity in lounge and bedroom
- CCTV entry controls

These features allow you to host:

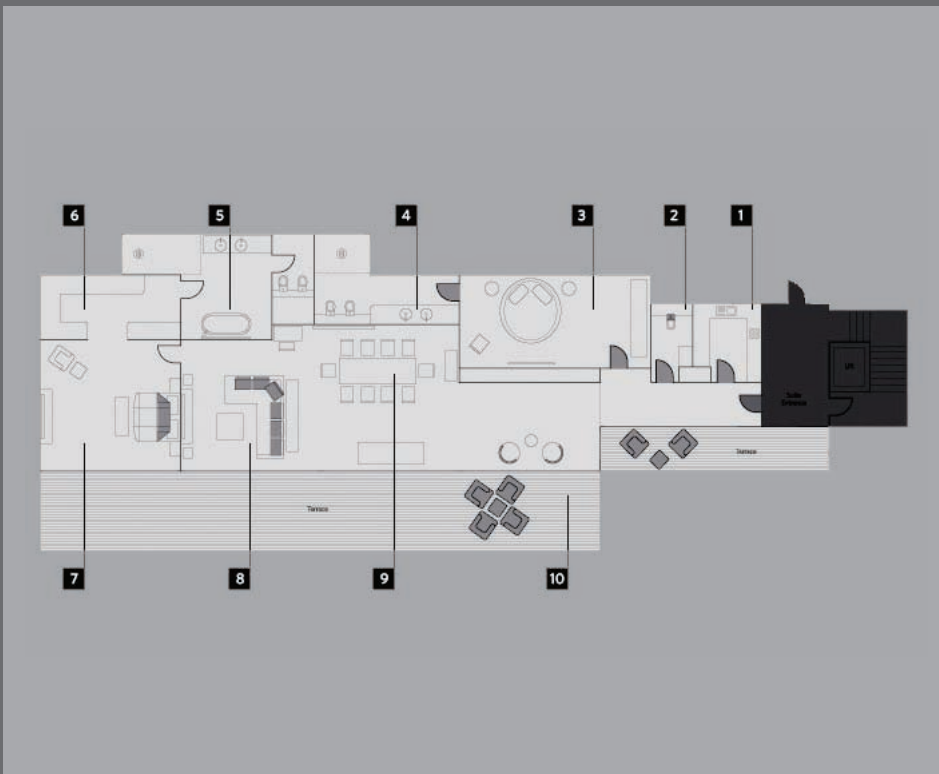
Corporate functions • Product launches • Meetings • Presentations • Filming



### SERVICES

The services you would expect of a luxury five-star-hotel are merely the starting point for The May Fair Suites' experience. 24-hour butler service, airport pickup and transfer and details such as fine pressing are all readily to hand. However, the true extent of our commitment to luxury service is shown in our management, discretion and pride in meeting every guest's wish.

## FLOOR PLAN



### THE PENTHOUSE

located on the 9th floor  
199m<sup>2</sup> / 2137.6 ft<sup>2</sup>

1. Kitchen
2. Rest room
3. Second bedroom
4. En-suite bathroom
5. Bathroom
6. Double dressing room
7. Master bedroom
8. Lounge
9. Dining room
10. Terrace

The May Fair Hotel, Stratton Street, London W1J 8LT Telephone +44 (0)20 7769 4041 Facsimile +44 (0)20 7493 0244  
Email [reservations@themayfairhotel.co.uk](mailto:reservations@themayfairhotel.co.uk) Website [themayfairhotel.co.uk](http://themayfairhotel.co.uk)

# THE MAY FAIR