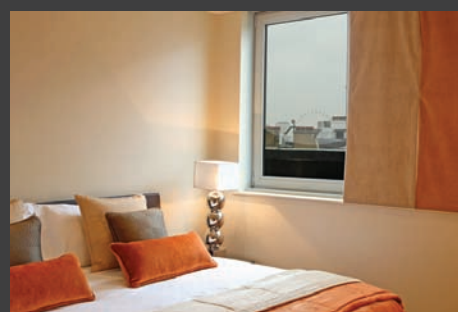
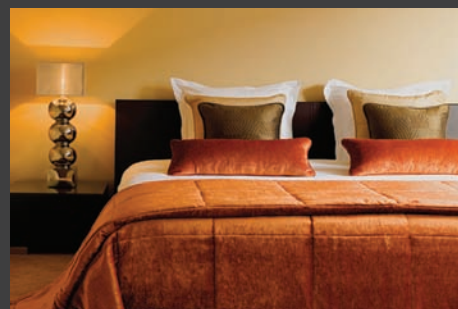


# THE SUITES COLLECTION

at The May Fair Hotel

To book or enquire call  
UK +44 (0)20 7769 4041  
US 1-888-201-1718

## THE SAFFRON



## VERSATILITY



### MEETINGS

The Saffron Suite's smooth, professional design and artistic style provide an ideal setting for interviews and more intimate meetings. With comfortable seating for up to eight guests, the five-star rooms come equipped for private screenings through a state-of-the-art Bang & Olufsen entertainment system, and can be set for breakfast, lunch or dinner meetings.



### LAUNCHES

The Saffron Suite's effortlessly stylish five-star surroundings add a confident, artistic tone to any launch event. The sleek elegance of the space is ideal for press interviews or exclusive cocktail gatherings in central London.



### EVENTS

There can be few more exclusive settings for entertaining than a luxury five star hotel room. The Saffron Suite's combination of easy glamour and smooth design provides an intimate environment for exclusive dinner parties or cocktail evenings.



### FILMING

The Saffron's elegant features set a mood of nostalgic cool for television broadcasters and music video producers right in the heart of London.

THE MAY FAIR

## SPECIFICATIONS



### SPECIFICATIONS

- Lounge with integrated fireplace, curtain and lighting system
- Bedroom with king size double bed
- Bathroom with LCD TV and illuminated rain shower



### DIMENSIONS

- Total floor space of the Saffron Suite is 83.67m<sup>2</sup> / 900.62ft<sup>2</sup>
- One interconnecting room



### TECHNOLOGY

- 42" Bang & Olufsen plasma TV and Bang & Olufsen CD player in lounge and bedroom
- CCTV entry controls

These features allow you to host:

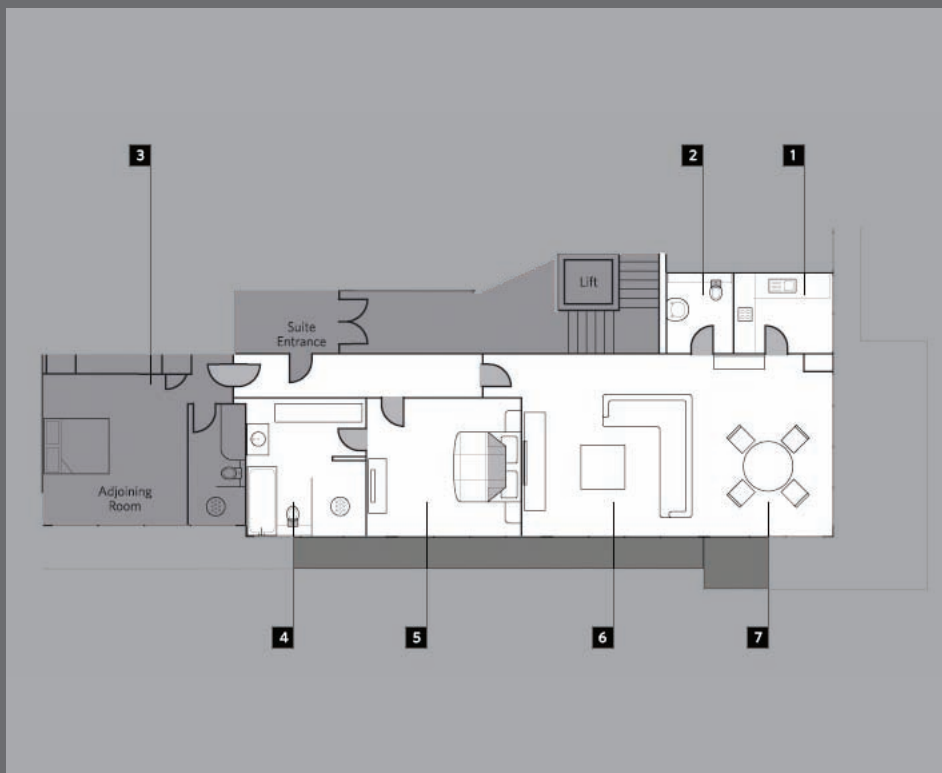
Corporate functions • Product launches • Meetings • Presentations • Filming



### SERVICES

The services you would expect of a luxury five-star-hotel are merely the starting point for The May Fair Suites' experience. 24-hour butler service, airport pickup and transfer and details such as fine pressing are all readily to hand. However, the true extent of our commitment to luxury service is shown in our management, discretion and pride in meeting every guest's wish.

## FLOOR PLAN



### THE SAFFRON

Located on the 8th floor  
83.67m<sup>2</sup> / 900.62 ft<sup>2</sup>

1. Kitchen
2. Rest room
3. Adjoining room
4. Bathroom
5. Bedroom
6. Lounge
7. Dining table

The May Fair Hotel, Stratton Street, London W1J 8LT Telephone +44 (0)20 7769 4041 Facsimile +44 (0)20 7493 0244  
Email [reservations@themayfairhotel.co.uk](mailto:reservations@themayfairhotel.co.uk) Website [themayfairhotel.co.uk](http://themayfairhotel.co.uk)

# THE MAY FAIR